

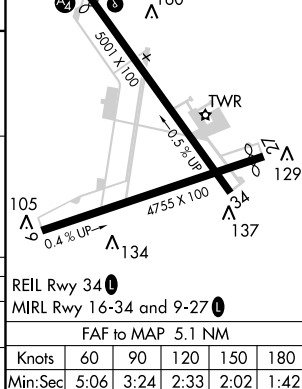
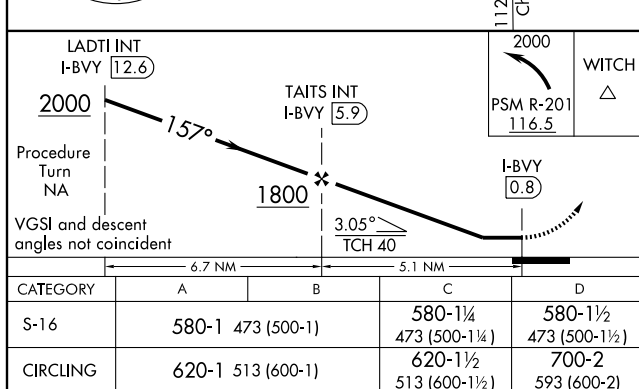
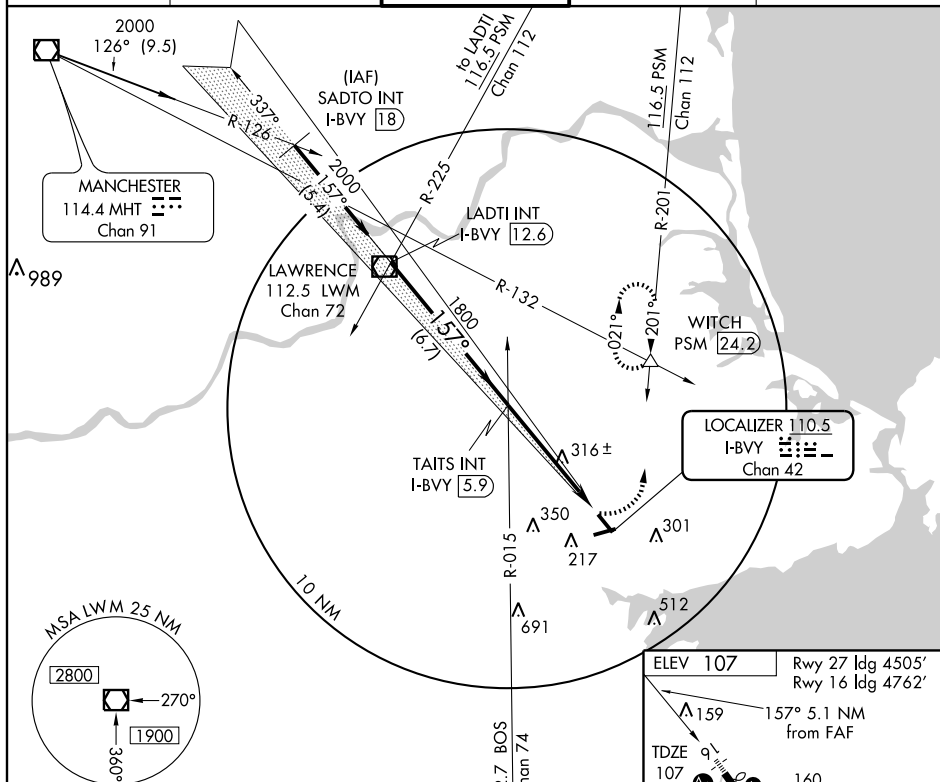
LOC RWY 16
BEVERLY MUNI (BVY)

T	Inoperative table does not apply.
A	

MALSF

MISSED APPROACH: Climbing left turn to 2000
via PSM R-201 to WITCH Int/24.2 DME and hold.

ATIS 119.2	BOSTON APP CON 124.4 279.6	BEVERLY TOWER ★ 125.2 (CTAF) 0	GND CON 121.6	UNICOM 122.95
---------------	-------------------------------	-----------------------------------	------------------	------------------



NE-1, 31 JUL 2008 to 28 AUG 2008

NE-1, 31 JUL 2008 to 28 AUG 2008