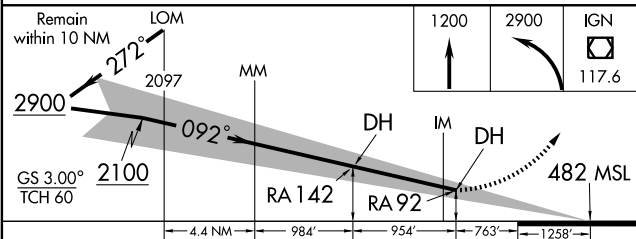
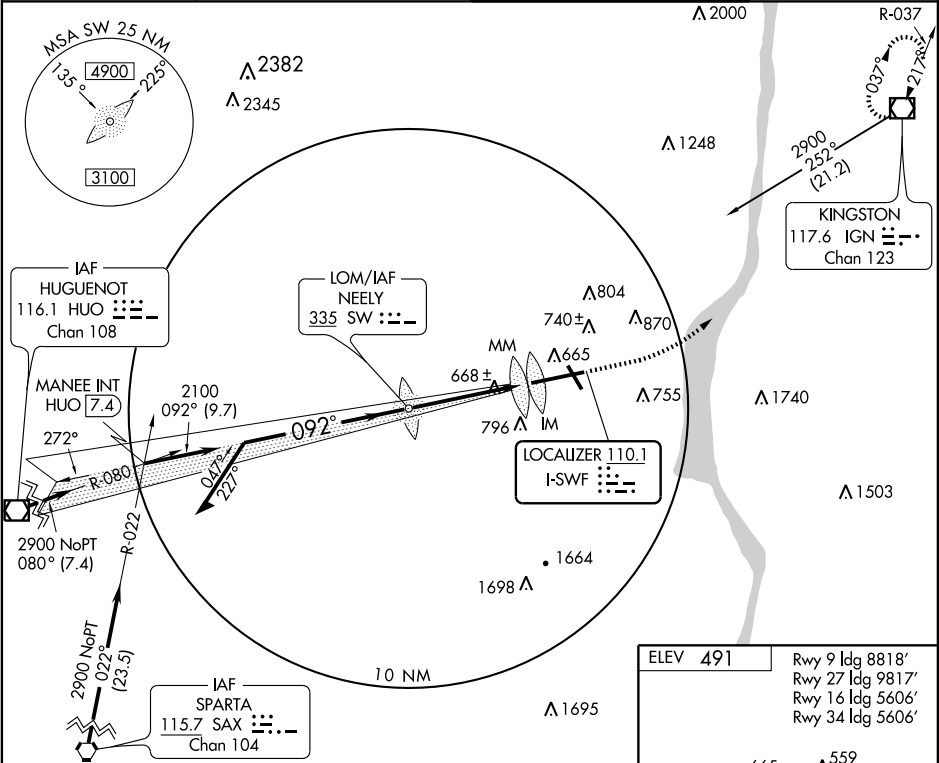


LOC I-SWF 110.1	APP CRS 092°	Rwy ldg 8818 TDZE 482 Apt Elev 491
---------------------------	------------------------	---

ILS RWY 9 (CAT II)
NEWBURGH/STEWART INTL (SWF)

	MISSED APPROACH: Climb to 1200, then climbing left turn to 2900 direct IGN VOR/DME and hold.
--	--

ATIS 124.575	NEW YORK APP CON 132.75 363.1	STEWART TOWER 121.0 254.4	GND CON 121.9
------------------------	---	-------------------------------------	-------------------------



CATEGORY	A	B	C	D
S-ILS 9		632/16	150 RA 142	
S-ILS 9		582/12	100 RA 92	

**CATEGORY II ILS - SPECIAL AIRCREW
& AIRCRAFT CERTIFICATION REQUIRED**

ELEV 491

Rwy 9 ldg 8818'
Rwy 27 ldg 9817'
Rwy 16 ldg 5606'
Rwy 34 ldg 5606'

665±

559

593

546±

11.817 X 150

0.4% DOWN

540±

TDZE 482

0.6% UP

34

27

16

9

11

10

8

7

6

5

4

3

2

1

0

1200

2900

IGN

117.6

TDZ/CL Rwy 9
HIRL Rwy 9-27
MIRL Rwy 16-34
REIL Rwy 16, 27 and 34

NE-2, 31 JUL 2008 to 28 AUG 2008

NE-2, 31 JUL 2008 to 28 AUG 2008